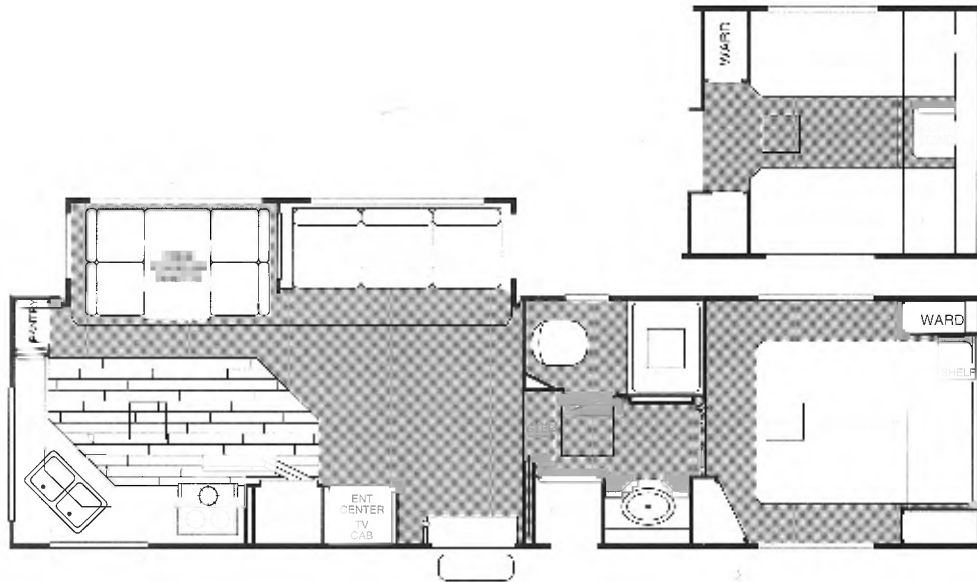
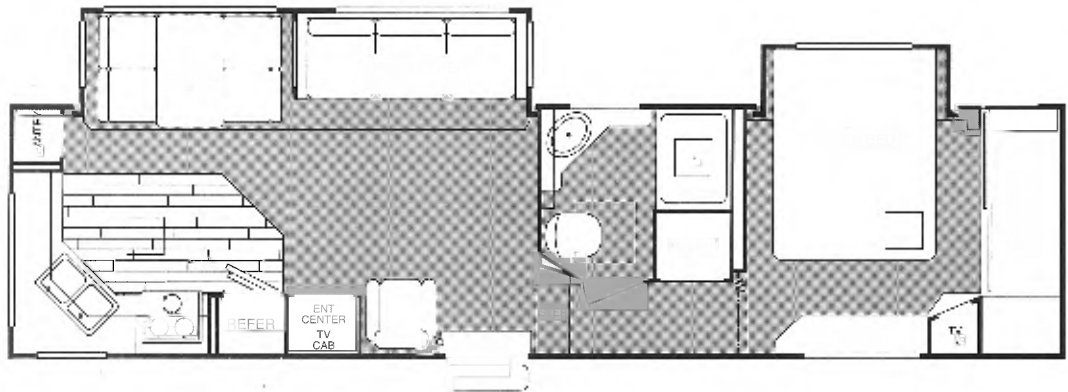


# *Avion Floor Plans*

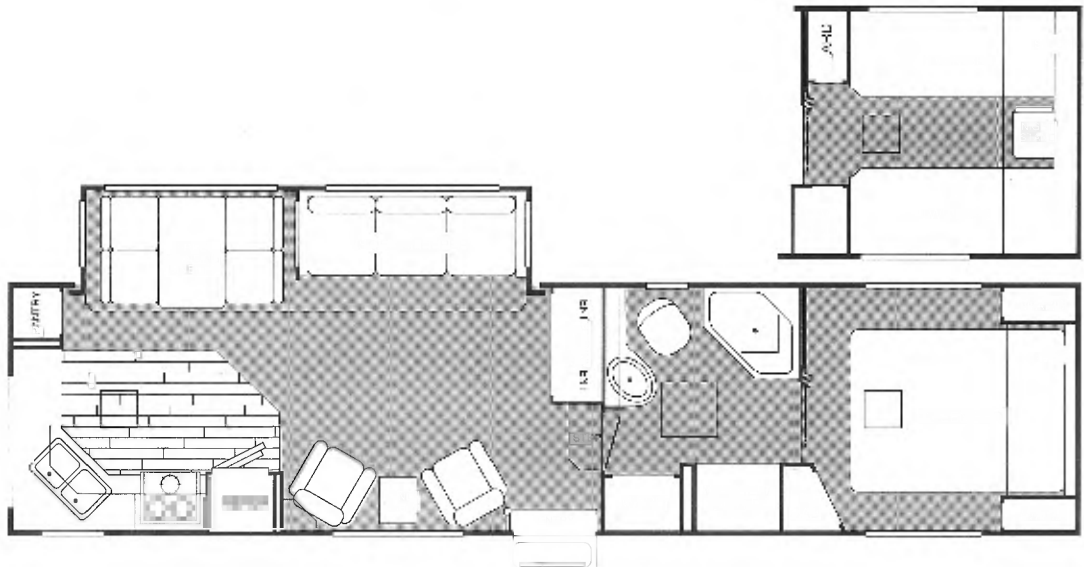
*Model*  
**305E**

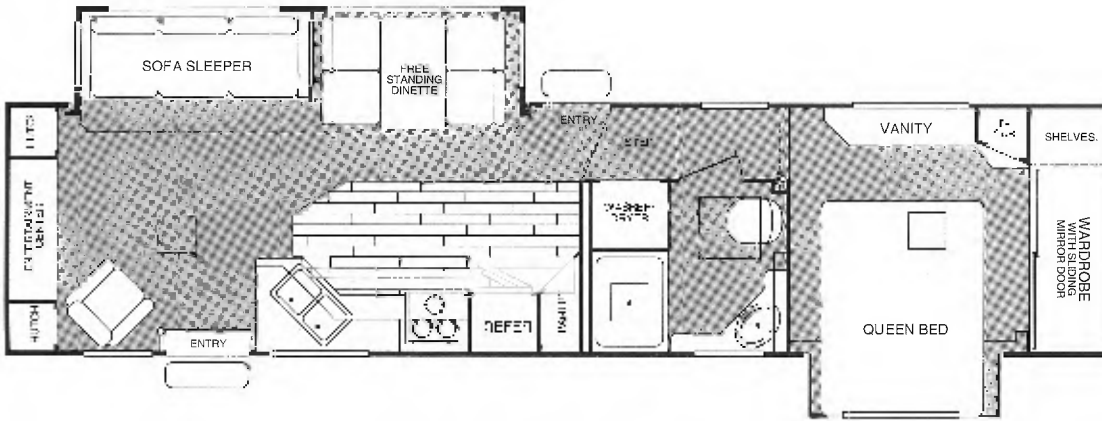


*Model*  
**335K**

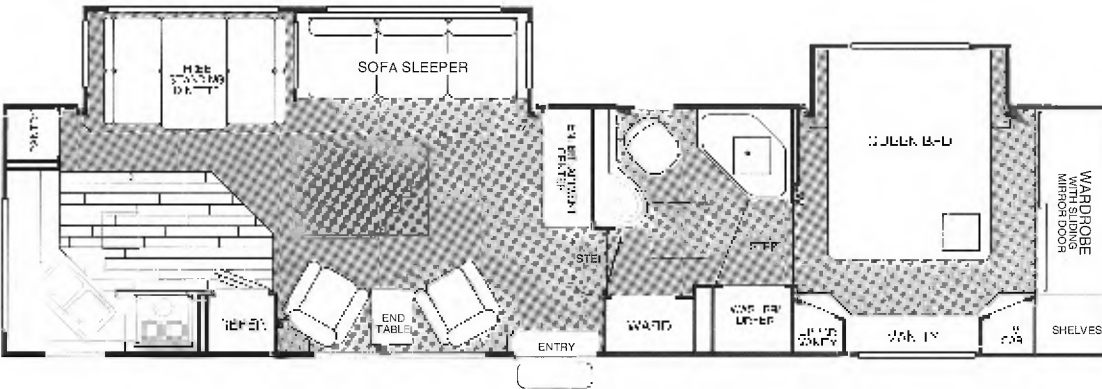


*Model*  
**345J**





*Model*  
**355G**



*Model*  
**365M**

# *Avion Specifications*

<b>Model Specifications</b>	<b>305E</b>	<b>335K</b>	<b>345J</b>	<b>355G</b>	<b>365M</b>
Steel Belted Radial Tires – Load Range	LT235/85R16-E	LT235/85R16-E	LT235/85R16-E	LT235/85R16-E	LT235/85R16-E
Approx. Gross Dry Weight w/Std. Equip. (lbs.) <sup>1</sup>	10,130	11,170	11,130	11,620	11,690
Approx. Hitch Dry Weight (lbs.) <sup>1</sup>	2,000	2,470	1,920	2,120	2,010
Approx. Axle Dry Weight (lbs.) <sup>1</sup>	8,130	8,700	9,210	9,500	9,680
GVWR (Gross Vehicle Weight Rating) (lbs.)	12,400	13,700	13,700	14,200	14,300
Interior Headroom (Living Area)	7'10" max.	7'10" max.	7'10" max.	7'10" max.	7'10" max.
Height	11'11"	11'11"	11'11"	11'11"	11'11"
Width	8'0"	8'0"	8'0"	8'0"	8'0"
Length	31'11"	34'7"	34'8"	35'11"	36'5"
Fresh Water Tank (Approx. Gal.)	50	50	50	50	50
Toilet Holding Tank (Approx. Gal.)	40	40	40	40	40
Grey Water Tank (Approx. Gal.)	41	54	55	40	58
Awning Length (Opt.)	21'	20'	23'	20'	22'

<sup>1</sup> All dry weights are based on standard features and do not include optional equipment.  
Note: For Canadian specifications please see your Avion dealer.

# Avion Standard Features

COMFORT/ACCOMMODATIONS	305E	335K	345J	355G	365M
80" Bed(s), Sealy® Innerspring Mattress	*	*	*	*	*
Solid Oak Face Frame Cabinetry & Cabinet Doors	*	*	*	*	*
Dome Skylight in Bath	*	*	*	*	*
Cedar Floor in Wardrobe Closets	*	*	*	*	*
Tinted Safety Glass Windows	*	*	*	*	*
Torque Windows in Bedroom & Galley	*	*	*	*	*
Sliding Mirror Wardrobe	*	*	*	*	*
Micro Mini Blinds w/Lambrequin Valance	*	*	*	*	*
Window Treatment	*	*	*	*	*
Bedspring & Pillow Shams	*	*	*	*	*
Wall Mounted Clock	*	*	*	*	*
Deluxe Residential Carpet & Padding	*	*	*	*	*
<b>BATH</b>					
Full Bath w/One-Piece Fiberglass Tub & Shower Combination	*	*	*	*	*
Corian® Lavatory Top w/China Sink	*	*	*	*	*
Folding Tub Enclosure	*	*	*	*	*
Glass Shower Enclosure	*	*	*	*	*
<b>GALLEY</b>					
Large Double Door Refrigerator w/Climate Control Operates w/Propane or Electricity	*	*	*	*	*
Deluxe Three-Burner Range Features Oven w/Black Glass Door	*	*	*	*	*
12V Range Hood w/Light, Fan, Spice Rack	*	*	*	*	*
Large Porcelain Double Sink & Two Cutting Board Covers	*	*	*	*	*
Pantry w/Removable Shelves or Fixed Shelves	*	*	*	*	*
Microwave Oven w/Turntable & Electronic Touch Control	*	*	*	*	*
Galley Faucet w/Single Lever Convenience	*	*	*	*	*
Corian® Galley Top	*	*	*	*	*
In-Line Water Filter w/Separate Faucet	*	*	*	*	*
Oak Hardwood Flooring at Galley	*	*	*	*	*
<b>HEATING/COOLING</b>					
Furnace w/Thermostat, Automatic Electronic Ignition & Forced Air Ducted Heat (BTUs)	*	*	*	*	*
15,000 BTU Air Conditioner w/In-Ceiling Ducting	*	*	*	*	*
<b>SELF-CONTAINMENT</b>					
Water Heater w/Dual Power Source Operates From Propane or Electricity	*	*	*	*	*
Dual 7 Gallon Liquid Petroleum Gas Tanks Mounted on Slide-Out Tray w/Automatic Changeover Switch	*	*	*	*	*
Holding Tanks are Fully Enclosed	*	*	*	*	*
In-Floor Heated Waste & Water Tanks	*	*	*	*	*

Product information and photography included in this brochure were as accurate as possible at the time of publication. Prices and specifications are subject to change without notice. Selected decorator items shown in the photographs are not part of the product unless specified. All liquid capacities are approximate and dimensions are nominal.

Your Local Avion Dealer Is:

CAMPING/TRAVEL	305E	335K	345J	355G	365M
Smoke Detector	*	*	*	*	*
Television & VCR & CD Player/Changer	*	*	*	*	*
Television Antenna w/Booster	*	*	*	*	*
Power Hitch Jack	*	*	*	*	*
Heavy Duty Stabilizing Jacks	*	*	*	*	*
Centralized Utility Compartment w/Phone Jack & Park TV Cable Connectors	*	*	*	*	*
Aerodynamic Front & Rear Caps	*	*	*	*	*
30" Wide Radius Main Entry Door w/Combination Flush Latch & Deadbolt Lock	*	*	*	*	*
Bumper & Wheel Well Trim Are Durable, Resilient Cross-Linked Polyethylene	*	*	*	*	*
Independent Rubber Torsion Axle Suspension w/Shock Absorbers	*	*	*	*	*
Welded Aluminum Sidewall Frame Construction	*	*	*	*	*
Crowned Welded Aluminum Roof	*	*	*	*	*
Laminated Wall w/Outer Layer of Continuous Cast Fiber Reinforced Polyester Resin; Insulation is Molded Expanded Polystyrene	*	*	*	*	*
Crowned, One-Piece EPDM Rubber Roof Sheeting	*	*	*	*	*
Tank Capacities Monitor System/12V Monitor	*	*	*	*	*
Propane Leak Detector	*	*	*	*	*
Carbon Monoxide Leak Detector	*	*	*	*	*
Entry Door has Recessed Assist Handle & Large Tinted Window w/Mini Blind	*	*	*	*	*
Modular Wheels w/Chrome Trim Rings	*	*	*	*	*
Spare Tire Mounted in the Chassis	*	*	*	*	*
Patented Fleetwood Laminated Sealed Luggage Doors for Basement Storage Access	*	*	*	*	*
Roof Ladder	*	*	*	*	*
<b>ELECTRICAL</b>					
50 Amp Electronic Converter & Battery Charger	*	*	*	*	*
120V AC Central Electrical Panel	*	*	*	*	*
120V Energy Manager Unit Featuring Automatic Switching Between Appliances	*	*	*	*	*
Reading Lights for Freestanding Chairs	*	*	*	*	*
12V Fantastic® Power Roof Vent in Bath & Bedroom	*	*	*	*	*
Ground Fault Interrupter Protects Bath, Galley & Patio Electrical Circuits	*	*	*	*	*
Exterior Utility Lighting at Roadside & Hitch	*	*	*	*	*
Storage Compartments are Lighted	*	*	*	*	*
Patio Light at Doorside	*	*	*	*	*
Central Battery Storage Features	*	*	*	*	*
Slide-Out Battery Rack	*	*	*	*	*
Built-In AM/FM Radio w/Cassette & 4 Speakers	*	*	*	*	*
Fluorescent Light at Galley	*	*	*	*	*
Wardrobe Closets are Lighted	*	*	*	*	*
Prewired for Solar Charging Panel	*	*	*	*	*

## Full One-Year Ownercare Warranty:

Fleetwood's commitment to owner satisfaction. Warranty valid only on product sold in the U.S.A. and Canada. See your dealer for complete details.

BY **FLEETWOOD**  
Quality Above All

**FLEETWOOD ENTERPRISES, INC.**

P.O. Box 92919

Milwaukee, WI 53202-0919