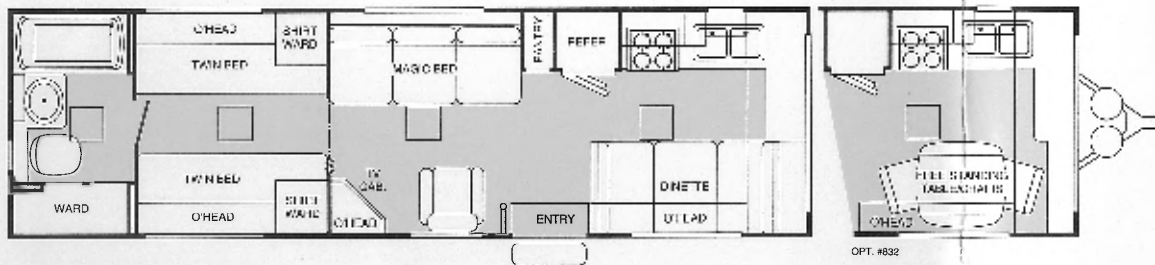


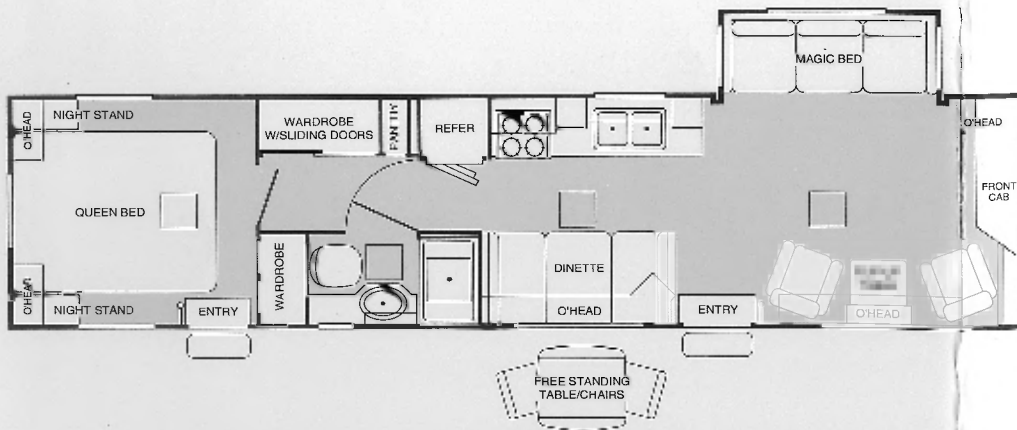
# AVION®

## MODEL SELECTION & SPECIFICATIONS



### 31N

Goodyear Steel Belted Radial Tires	ST225/75R15
Tire Load Range	C
Gross Dry Weight	7,280
Hitch Dry Weight	895
Axle Dry Weight	6,385
GVWR (Gross Vehicle Weight Rating)	9,200
Height	10'8"
Width	8'0"
Length	31'5"
Fresh Water Tank (Gal.)	60
Toilet Holding Tank (Gal.)	40
Grey Water Tank (Gal.)	40



### 37A

Goodyear Steel Belted Radial Tires	ST225/75R15
Tire Load Range	C
Gross Dry Weight	9,195
Hitch Dry Weight	925
Axle Dry Weight	8,270
GVWR (Gross Vehicle Weight Rating)	11,500
Height	10'8"
Width	8'0"
Length	37'7"
Fresh Water Tank (Gal.)	50
Toilet Holding Tank (Gal.)	40
Grey Water Tank (Gal.)	40

### 005T

Goodyear Steel Belted Radial Tires	ST225/75R15
------------------------------------	-------------

Additional (Investment in Contract):

Variable	Fixed	Variable	Fixed	Variable
Additional		Tax-Deferred		Employer Additional
<b>Additional Contributions</b>				

Investment in Contract:	Variable	Fixed	Total
\$585,580.91	\$8,514.34	\$580,814.19	
2.00	\$1.00	2.00	
\$17,520.23	\$109.01	\$17,635.20	
\$282,010.34	\$1,811.53	\$283,891.23	

Fixed Variable Total

**Employees Reduced Contributions**

Employees contributions have increased as of the date of this statement. Contributions for calendar year service. See attached for explanation. For calendar year service. See attached for explanation. For calendar year service. See attached for explanation.

21.01    
  4.83    
  21.87

Year	Estimated	Years of Service
1/2 OF 1/1/00	21.01	4.83
Before 2000		
After 2000		
<b>Total Service</b>	<b>21.87</b>	

Each month, Judge Educational Group, Inc. controls its plan and also allows for the first year. For calendar year service. See attached for explanation. For calendar year service. See attached for explanation.

1053  
 BIRTHDATE 4-13-1949  
 SSN XXX-XX-1983

**STATEMENT OF BENEFITS**

2 Codes: 901(9) & 401(1)  
 January 1, 2000  
 WRS RETIREMENT SYSTEM (WRS)  
 ENT OF EMPLOYEES TRUST FUNDS

including personal benefits  
 (keep this document with your  
 other records.  
 before a change in address or  
 contact WRS at (800) 822-2222  
 apply to corrections or updates  
 immediately. (Print name that  
 will appear on records in  
 shown subject on records as of  
 previous month. The subject



OPT. 837

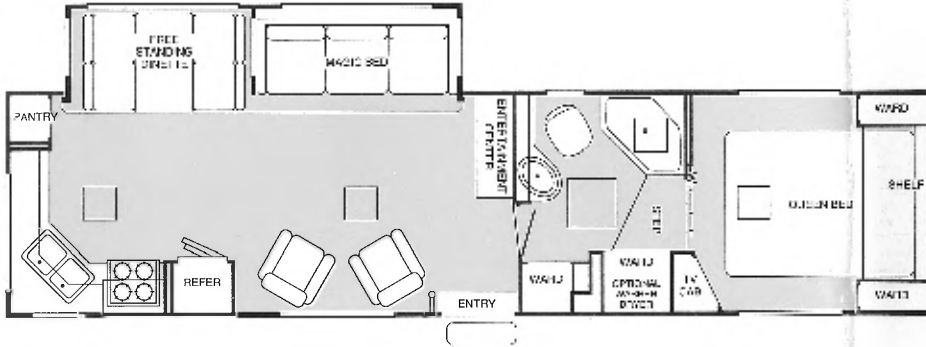
# 295T

Goodyear Steel Belted Radial Tires	ST225/75R15
Tire Load Range	C
Gross Dry Weight	8,460
Hitch Dry Weight	1,620
Axle Dry Weight	6,840
GVWR (Gross Vehicle Weight Rating)	10,600
Height	11'7"
Width	8'0"
Length	29'10"
Fresh Water Tank (Gal.)	50
Toilet Holding Tank (Gal.)	40
Dual Grey Water Tanks (Gal.)	18/27



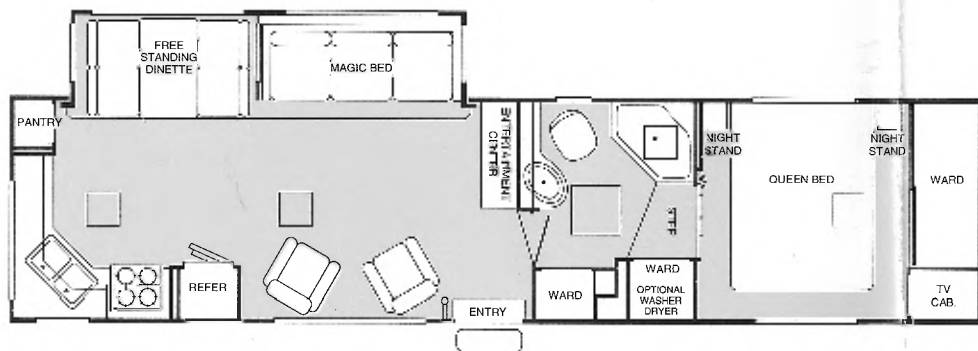
# 315F

Goodyear Steel Belted Radial Tires	ST225/75R15
Tire Load Range	D
Gross Dry Weight	9,290
Hitch Dry Weight	1,850
Axle Dry Weight	7,440
GVWR (Gross Vehicle Weight Rating)	11,700
Height	11'8"
Width	8'0"
Length	31'9"
Fresh Water Tank (Gal.)	50
Toilet Holding Tank (Gal.)	40
Dual Grey Water Tanks (Gal.)	18/27



# 335J

Goodyear Steel Belted Radial Tires	ST225/75R15
Tire Load Range	D
Gross Dry Weight	9,560
Hitch Dry Weight	1,520
Axle Dry Weight	8,040
GVWR (Gross Vehicle Weight Rating)	12,000
Height	11'8"
Width	8'0"
Length	33'10"
Fresh Water Tank (Gal.)	50
Toilet Holding Tank (Gal.)	40
Dual Grey Water Tanks (Gal.)	18/27



# 355M

Goodyear Steel Belted Radial Tires	ST225/75R15
Tire Load Range	D
Gross Dry Weight	10,100
Hitch Dry Weight	1,875
Axle Dry Weight	8,225
GVWR (Gross Vehicle Weight Rating)	12,600
Height	11'8"
Width	8'0"
Length	35'8"
Fresh Water Tank (Gal.)	50
Toilet Holding Tank (Gal.)	40
Dual Grey Water Tanks (Gal.)	18/27



# 355P

Goodyear Steel Belted Radial Tires	ST225/75R15
Tire Load Range	D
Gross Dry Weight	9,710
Hitch Dry Weight	1,845
Axle Dry Weight	8,225
GVWR (Gross Vehicle Weight Rating)	12,400
Height	11'7"
Width	8'0"
Length	35'6"
Fresh Water Tank (Gal.)	50
Toilet Holding Tank (Gal.)	40
Dual Grey Water Tanks (Gal.)	18/26

# STANDARD

<i>COMFORT/ACCOMMODATIONS</i>	31N	37A	295T	315F	335J	355M	355P
80" length bed(s), Sealy® mattress	—	•	•	—	—	—	—
75" length bed(s), Sealy® mattress	•	—	—	•	•	•	•
Solid oak cabinets	•	•	•	•	•	•	•
Deluxe seat and back cushions with deep tufted styling	•	•	•	•	•	•	•
Flex-O-Lator® dinettes	•	•	—	—	—	—	•
Solid dome skylight in bath	•	•	•	•	•	•	•
Cedar lining in wardrobe closets	•	•	•	•	•	•	•
Tinted safety glass windows	•	•	•	•	•	•	•
Torque windows in bedroom and galley areas	•	•	•	•	•	•	•
Dovetail drawer construction	•	•	•	•	•	•	•
Beveled mirror on wardrobe door	•	•	•	•	•	•	•
Oak plank flooring in galley	•	•	•	•	•	•	•
Micro mini blinds with lambrquin valance window treatment	•	•	•	•	•	•	•
Oak framing around overhead 12V light fixtures	•	•	•	•	•	•	•
Bedsread and pillow shams	•	•	•	•	•	•	•
Wall mounted clock	•	•	•	•	•	•	•
Solid metal vent dome in bedroom	•	•	•	•	•	•	•
<i>BATH</i>							
Full bath with one piece fiberglass tub and shower combination	•	•	•	•	•	•	•
Corian® lavatory top with china sink	•	•	•	•	•	•	•
Folding tub enclosure	•	•	•	—	—	—	—
Glass shower enclosure	—	—	—	•	•	•	•
<i>GALLEY</i>							
Large double door refrigerator with dual power source convenience, operates off of either propane or electricity	•	•	•	•	•	•	•
Deluxe four-burner range features oven with black glass door	•	•	•	•	•	•	•
12V range hood with light, fan and spice rack	•	•	•	•	•	•	•
Large porcelain double sink and two hardwood cutting board covers	•	•	•	•	•	•	•
Pantry with two removable drawers and two removable shelves	•	•	•	*	▲	▲	•
Microwave oven with electronic touch control	•	•	•	•	•	•	•
Galley faucet with single lever convenience	•	•	•	•	•	•	•
Corian® galley top	•	•	•	•	•	•	•
In-line water filter	•	•	•	•	•	•	•
* 2 pantrys with a total of 6 removable shelves ▲ 4 removable shelves only							
<i>HEATING/COOLING</i>							
35,000 BTU furnace with thermostat, automatic electronic ignition and forced air ducted heat	•	•	•	•	•	•	•
Roof prewired and reinforced for optional dual air conditioners	—	•	—	•	•	•	•
10,000 BTU sub-floor air conditioner	*	—	*	•	•	•	•
* Single air conditioner only							
<i>SELF CONTAINMENT</i>							
Water heater with dual power source convenience, operates off of either propane or electricity (gallons)	10	10	10	10	10	10	10
Dual 7-gallon liquid petroleum gas tanks and regulator with automatic changeover switch	•	•	•	•	•	•	•

PLEASE READ

Product information and photography in this brochure were as accurate as possible at the time of publication. Subsequent refinements may be evident in the actual product. Prices and specifications are subject to change without notice. Selected decorator items shown in the photographs are not part of the product unless specified. All liquid capacities are approximate and dimensions are nominal. Warranty valid only on product sold in the U.S.A. and Canada.

# FEATURES

	31N	37A	295T	315F	335J	355M	355P
Solid waste holding tank	•	•	•	•	•	•	•
Holding tanks are fully enclosed	•	•	•	•	•	•	•
<i>CAMPING/TRAVEL</i>							
Smoke detector	•	•	•	•	•	•	•
Television and VCR hookups are prewired	•	•	•	•	•	•	•
Television antenna	•	•	•	•	•	•	•
Power hitch jack	•	•	•	•	•	•	•
Stabilizing jacks	•	•	•	•	•	•	•
Centralized utility compartment with city water, phone jack and park television cable connectors	•	•	•	•	•	•	•
Aerodynamic front and rear caps	•	•	•	•	•	•	•
30" wide radiused main entry door with combination flush latch and deadbolt lock	•	•	•	•	•	•	•
Bumper and wheel well trim are of durable, resilient cross-linked polyethylene	•	•	•	•	•	•	•
The finest engineered independent rubber torsion axle suspension	•	•	•	•	•	•	•
Welded aluminum frame construction	•	•	•	•	•	•	•
Crowned welded aluminum roof	•	•	•	•	•	•	•
Laminated wall with outer layer of continuous cast fiber reinforced polyester resin; insulation is of molded expanded polystyrene	•	•	•	•	•	•	•
Crowned, one-piece EPDM (elastomeric monomer) roof sheeting	•	•	•	•	•	•	•
Capacities monitor with control center switches	•	•	•	•	•	•	•
Propane leak detector	•	•	•	•	•	•	•
Entry door has recessed assist handle and large tinted window with mini blind	•	•	•	•	•	•	•
Turbo wheel covers	•	•	•	•	•	•	•
Spare tire mounted in the chassis	•	•	•	•	•	•	•
Floor is cross trussed with basement storage	•	•	•	•	•	•	•
<i>ELECTRICAL</i>							
45 amp electronic converter and battery charger	•	•	•	•	•	•	•
120V AC central electrical panel	•	•	•	•	•	•	•
12V Fantastic power roof vent in bath	•	•	•	•	•	•	•
Ground fault interrupter protects bath, galley and patio electrical circuits	•	•	•	•	•	•	•
Exterior utility lighting at roadside and hitch	•	•	•	•	•	•	•
Storage compartments are lighted	•	•	•	•	•	•	•
Patio light at doorside	•	•	•	•	•	•	•
Exterior 120V AC receptacle is weatherproof	•	•	•	•	•	•	•
Central battery storage features slide-out battery rack	•	•	•	•	•	•	•
Built-in AM/FM radio with cassette and four speakers	•	•	•	•	•	•	•
Fluorescent lights in dinette and galley	•	•	•	•	•	•	•
Wardrobe closets are lighted	•	•	•	•	•	•	•
Prewired for solar charging panel	•	•	•	•	•	•	•

**Full One-Year Ownercare Warranty**  
 Fleetwood's commitment to owner satisfaction  
 Warranty valid only on product sold in the U.S.A.  
 and Canada. See your dealer for complete details