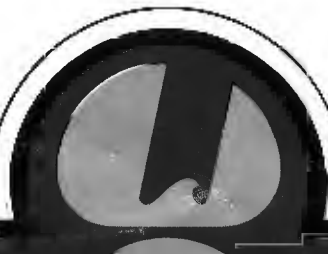


19



87

# AVION

BY FLEETWOOD

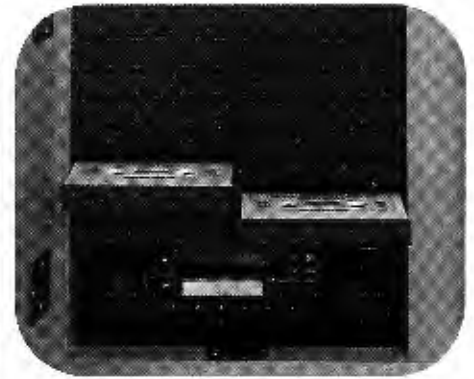


*America's Finest Travel Trailer*





Depending upon the model, Avion travel trailers are available with double, queen or twin beds as shown. The Sealy® mattress is standard equipment.



The front overhead cabinet contains the AM/FM/Cassette stereo tuner. The tuner is equipped with "seek and scan" and is all electronic. Four 2-way speakers are included in the sound system. Cassette tape library trays are spring loaded for safe tape storage.



Abundant, functional storage is found throughout the Avion. From the large wardrobes, overhead cabinets and storage beneath convertible furnishings, you travel comfortably equipped. Dovetail construction reflects the craftsmanship found within. Like residential cabinetry, drawers are sanded satin smooth and sealed.



Avion's galley reflects careful planning with the larger overhead storage cabinets. The double bowl residential quality porcelain sink is equipped with single mix faucet plus purified fresh water dispenser faucet. Highly convenient Magic Chef® electronic "Touch Control" microwave oven and 4-burner range/oven provide all of the cooking versatility needed. (The microwave is optional in Model 25H. Also, the purified water system is not available in Model 25H.)



An all aluminum LPG tank cover protects the LP tanks from road hazards. The hinged ABS top allows for quick inspection of the visual gas reserve gauge. For Model 25H, see option listing, page 7.

# WELCOME ABOARD TO AVION CLASS TRAVEL



You'll dine in total comfort while seated on the 5" thick Superfoam cushions. Upholstery is Scotchgard® protected for durability and easy maintenance. Beneath each seat, a generous storage compartment for less frequently used items. New Flex-O-Lator springs and hardware provide residential comfort plus 2-position seating for dining or relaxing. A convenient map pocket/magazine rack is included in dinette models.



The TV table is designed for the contemporary, portable TV. The shelf recesses out of the way when not in use (in select models). TV antenna and wiring for the park cable TV coaxial cable is standard.



Avion's monitor panel contains a 12 Volt disconnect switch to power down all 12V circuits when not in use. Other functions include analog clock, LP gas reserve, battery condition, barometer, thermometer and hygrometer (humidity).



Step aboard on Avion's durable steel double step that has rounded corners and non-skid edges for your personal safety. Convenient night lights are also included.



The bath vanity countertop is covered with self-edged high-impact marble finish laminate for durability and elegance. A residential quality single-mix faucet is standard.




All Avion models are equipped with a large tub/shower for personal convenience and comfort. A cast-in shower seat is included.

1987 Avion furnishings feature velvets made with HERCULON® Olefin Fiber for soil-resistance, easy cleaning and durability.



**Full timing? Retiring? Want the most sought after vacation home on the road today? The Avion travel trailer by Fleetwood offers the quality, durability and luxury you desire for you and your family.**

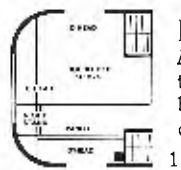


**Avion's living room features deluxe, highly durable furnishings for personal comfort and lasting style. Tasteful front storage cabinets and overhead shelving complete the residential feeling. New for 1987 — living room picture window in most models.**



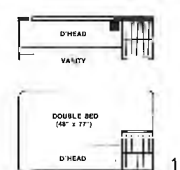
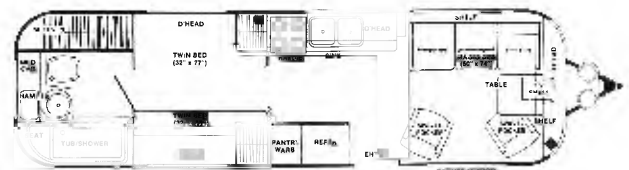
# AVION MODEL SELECTIONS

The 1987 Avion travel trailer is offered in six models ranging in size from the surprisingly economical Model 25H to the impressive thirty-four foot models.



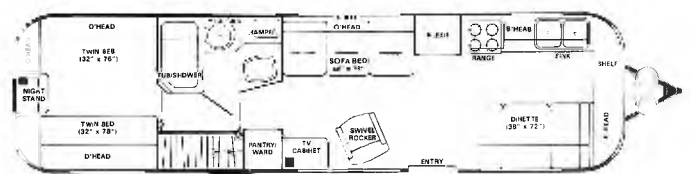
## MODEL 25H

Avion quality and economy combine in this smaller model to provide fun-filled vacations. HIGHLIGHTS — private rear bedroom, large bath, comfortable guest seating or family dining up front. Options (1) double bed (2) dinette.



## MODEL 30P

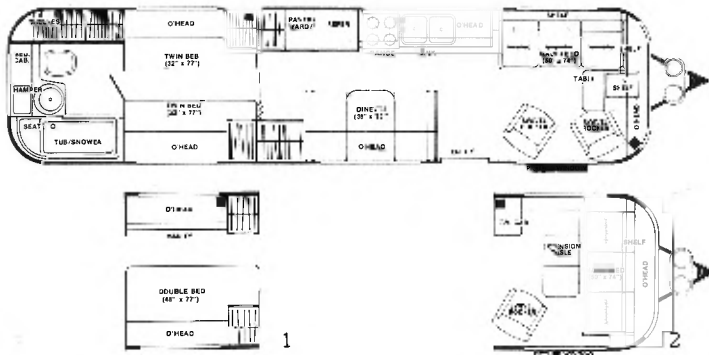
This mid-size model offers excellent towing characteristics and livability. HIGHLIGHTS — front living room also offers very comfortable dining as well as guest sleeping capability. Rear bath and center bedroom can be made totally private. Note the abundant wardrobe space in the bath. Options (1) double bed (2) front Magic Bed®.



## MODEL 32S

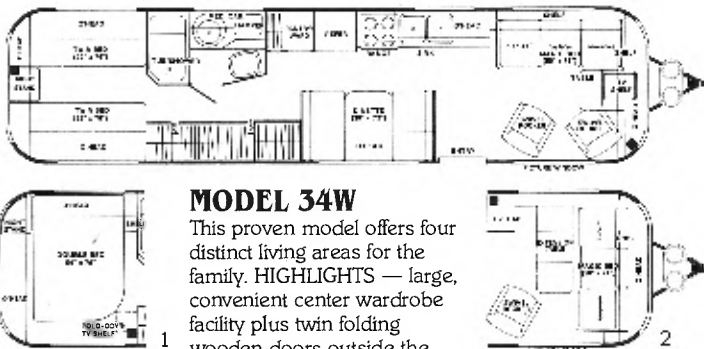
A new model offering numerous owner benefits. HIGHLIGHTS — center living room offers "at home" welcome to friends. Front galley and dinette provides for private dining or separate entertaining. Bath and bedroom can be made totally private with the folding, wooden door. Option (1) double bed.

# 1987 Avion



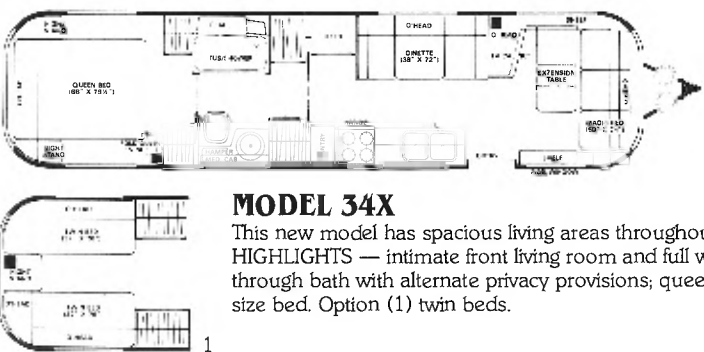
## MODEL 34V

This traditional plan offers three distinct living areas. HIGHLIGHTS — the Magic Bed® converts for guest and family sleeping. The living room can be made night-time private with the folding wooden door. Abundant wardrobe storage is found throughout. Options (1) double bed (2) front Magic Bed®.



## MODEL 34W

This proven model offers four distinct living areas for the family. HIGHLIGHTS — large, convenient center wardrobe facility plus twin folding wooden doors outside the bath to create a private dressing area. Options (1) double bed (2) front Magic Bed®.



## MODEL 34X

This new model has spacious living areas throughout. HIGHLIGHTS — intimate front living room and full walk-through bath with alternate privacy provisions; queen size bed. Option (1) twin beds.

	25H	30P	32S	34V	34W	34X
<b>Weights, Measures</b>						
Length, including hitch	25'10"	30'1"	32'7"	34'11"	34'11"	34'11"
Width	7'11"	7'11"	7'11"	7'11"	7'11"	7'11"
Height (including roof air)	10'0"	10'0"	10'0"	10'0"	10'0"	10'0"
GVWR - lbs.	7,000	8,550	8,550	9,500	9,500	9,500
Gross dry weight - lbs.	4,975	5,840	6,100	7,085	6,875	6,880
Hitch dry weight - lbs.	725	630	730	765	720	620
<b>Seating/Sleeping</b>						
Sleeping capacity	4	4	6	6	6	6
Dinette bed size	—	—	38x72	38x72	38x72	38x72
Sofa bed size	46x75	—	46x75	—	—	—
Twin bed size — Sealy®	32x76	32x77	32x76	32x77	32x76	32x76
Double bed size — Sealy® (optional)	54x76	48x77	54x76	48x77	54x76	—
Queen bed size — Sealy®	—	—	—	—	—	60x80
Magic Bed®	—	•	—	•	•	•
<b>Galley</b>						
Refer & 2-way LP/110V (size)	Med.	Lge.	Lge.	Lge.	Lge.	Lge.
Range — DLX 4 burner w/lg. oven & light	•*	•	•	•	•	•
Electronic Touch Control microwave oven	—	•	•	•	•	•
Range hood (power)	•	•	•	•	•	•
Sink — porcelain 18" x 32"	•	•	•	•	•	•
Delta® single lever faucet	•	•	•	•	•	•
Galley top — laminate w/hardwood edge	•	•	•	•	•	•
Everpure™ water purifier	—	•	•	•	•	•
Sink cover — hardwood (2)	•	•	•	•	•	•
Galley window w/mini blind	•	•	•	•	•	•
Spice cabinet	•	•	•	•	•	•
Pull-out towel bar	•	•	—	•	•	•
Spice rack (2)	•	•	•	•	•	•
Range cover — stainless steel	—	•	•	•	•	•
<b>Bath</b>						
Tub with seat	•	•	•	•	•	•
Sink (porcelain)	•	•	•	•	•	•
Telephone shower head w/shut-off	•	•	•	•	•	•
Toilet marine (w/water saver)	—	•	•	•	•	•
Lighted brass medicine cabinet	•	•	•	•	•	•
Mirrored wardrobe doors	—	•	—	•	—	•
Shower curtain	•	•	•	•	•	—
Towel bar and ring	•	•	•	•	•	•
Bath window w/mini blind	•	•	•	•	•	•
Hamper w/removable laundry bag	•	•	•	•	•	•
Folding Tub Enclosure	—	—	—	—	—	•
<b>Storage</b>						
Pantry (w/slide-out bins)	—	•	•	•	•	•
Cabinet door — hollow core — Birch	•	•	•	•	•	•
Hinges w/struts (overhead)	•	•	•	•	•	•
Positive catches	•	•	•	•	•	•
Wooden drawers w/Accuride slides and friction travel lock	•	•	•	•	•	•
Dovetail drawer construction	•	•	•	•	•	•
Mortise and tenon cabinet construction	•	•	•	•	•	•
Cedar lined wards	—	•	•	•	•	•
Wardrobe w/shelf	•	•	•	•	•	•
Dinette base storage area	—	—	•	•	•	•
Dinette magazine rack	—	—	•	•	•	—
Sofa base storage area	•	•	•	•	•	•
Exterior trunk and door	•	•	•	•	•	•
Below floor storage (exterior)	•	•	•	•	•	•

\* = w/o oven light