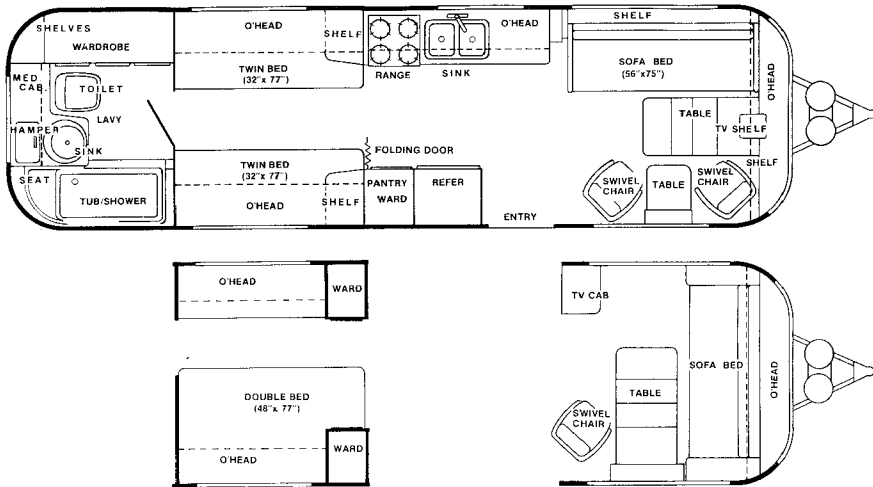
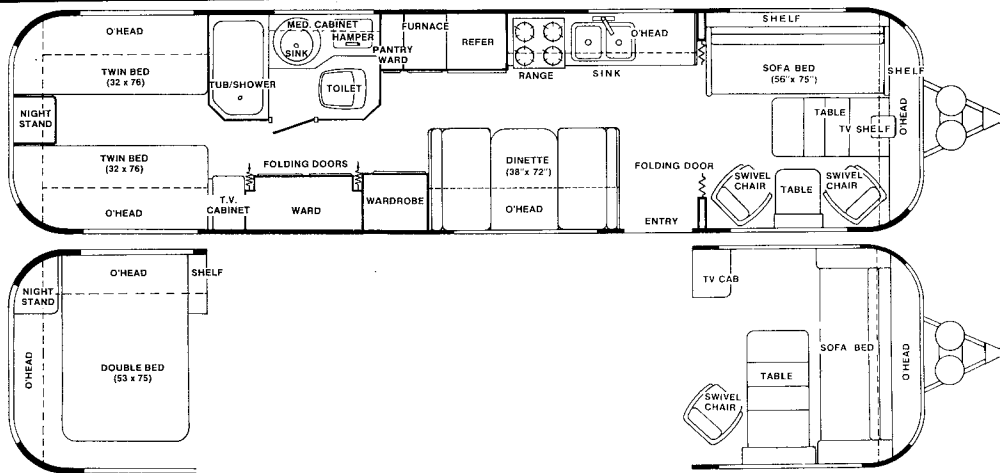


AVION MODELS



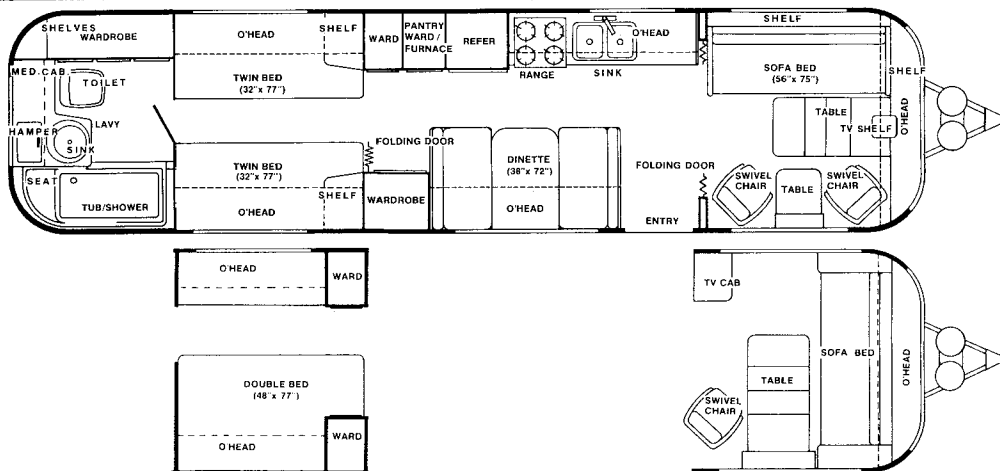
MODEL 30P

This tandem axle model features the side sofa bed and twin swivel chairs. No charge options include a double bed and a front sofa bed with side mounted extension table and swivel chair. Living room and bath are the same size as in the large models.



MODEL 34W

This thirty four foot tri-axle model has an extra large center bath with an exclusive full tub/shower and rear bedroom. It features the side sofa bed, tables and swivel chairs. No charge options include a double bed and front sofa bed with a side mounted extension table and swivel chair.



MODEL 34V

This highly popular Avion model offers the traditional features the discriminating family desires. No charge options include a front sofa bed with a side mounted extension table and swivel chair; double bed. Has tri-axle Adjust-A-Ride™ suspension.

A word about options: The only extra charge factory installed options available are (1) long length doorside awning (2) roadside/rear awning combination for living room, galley and bath windows.

FLEETWOOD

Your Local Dealer is:

Powers Travel Center, Inc.
14525 Highway 65 N.E.
Anoka, (Ham Lake), MN. 55303
Phone (612) 434-4808

AVION COACH CORPORATION
1300 E. Empire Avenue
Benton Harbor, Michigan 49022
(616) 927-2271

AVION GENERAL SPECIFICATIONS	30P	34W	34V
<i>Weights, Measures</i>			
Length, including hitch	30'-11"	34'-11"	34'-11"
Width	7'-10 ³ / ₄ "	7'-10 ³ / ₄ "	7'-10 ³ / ₄ "
Height (including roof air)	9'-11"	9'-11"	9'-11"
GVWR - lbs	8550	9500	9500
Gross dry weight - lbs	5840	6730	6940
Hitch dry weight - lbs	630	720	765
<i>Living Systems</i>			
Fresh water - gals	65	65	65
Manual water fill - spout w/lock	•	•	•
Dual holding tanks - waste/grey, gals	40/30	40/30	40/30
Dual LP tanks, sight gauge - lbs	40	40	40
Everpure™ water purifier	•	•	•
13.5M BTU roof air, heat strip	•	•	•
LPG auto changeover regulator	•	•	•
30M BTU ducted furnace w/thermostat	•	•	•
Electronic ignition water heater - gals	6	6	6
<i>Construction</i>			
Riveted aluminum ribs and stringers	•	•	•
Bright anodized aluminum exterior	•	•	•
2" x 6" tubular steel chassis*	•	•	•
Adjust-A-Ride™ suspension	•	•	•
Riveted vinyl coated aluminum interior	•	•	•
Hand finished solid wood cabinetry	•	•	•
Heavy duty rear bumper	•	•	•
Steel wheels, deluxe covers	•	•	•
Full size aluminum entry/screen door	•	•	•
Thermo-X™ insulation	•	•	•
Code approved wiring, plumbing	•	•	•
Insulated sandwich panel subfloor	•	•	•
Vinyl foam sealant tape	•	•	•
Electric brakes, all wheels	•	•	•
Tires, 7.00 x 15 load range**	D	D	D
or 8.55 x 15 load range**	C	C	C
or H78 x 15 load range**	C	C	C
<i>Electrical</i>			
Dual 12 volt battery container	•	•	•
Omnipower 110v converter/charger	•	•	•
Utility compartment 110v outlet	•	•	•
25' H. D. 110v shore line	•	•	•
Prewired for cable TV	•	•	•
Switch controlled interior/exterior lighting	•	•	•
<i>Travel/Camping Conveniences</i>			
Front window rockguard/sunshade	•	•	•
Heavy duty power hitch jack	•	•	•
Retractable entry step	•	•	•
Multiple exterior storage compartments	•	•	•
Stabilizing jacks	•	•	•
Exterior convenience lights, hitch, utilities	•	•	•
Awning rails, both sides	•	•	•
Water hose compartment	•	•	•
Concealed drain hose valve	•	•	•
Lighted trunk with spare tire, jack	•	•	•
Backup lights	•	•	•
Emergency egress, fire extinguisher	•	•	•
Rear hose storage compartment	•	•	•
Large safety glass torque windows	•	•	•
RV systems monitor w/12v failsafe	•	•	•
<i>Personal Conveniences</i>			
Adjustable reading lights	•	•	•
AM/FM cassette stereo w/4 speakers	•	•	•
Braund Skyliner™ VHF/UHF TV antenna	•	•	•
Dometic™ 10 cu. ft. (rated) 110v/LP refrigerator	•	•	•
Magic Chef™ microwave oven	•	•	•
Sealy Posturepedic™ mattress (es)	•	•	•
Lighted/fan powered galley vent	•	•	•
Deluxe ceiling vents with fans	•	•	•
5" thick Superfoam cushions	•	•	•
Indirect lighting, living room	•	•	•
Removable deep pile carpet	•	•	•

* Includes additional 2" x 4" tubular steel reinforcement at load bearing points.

** Tire manufacturers will be changing tire size codes by mid-year 1983.

Prices and specifications are subject to change without notice.