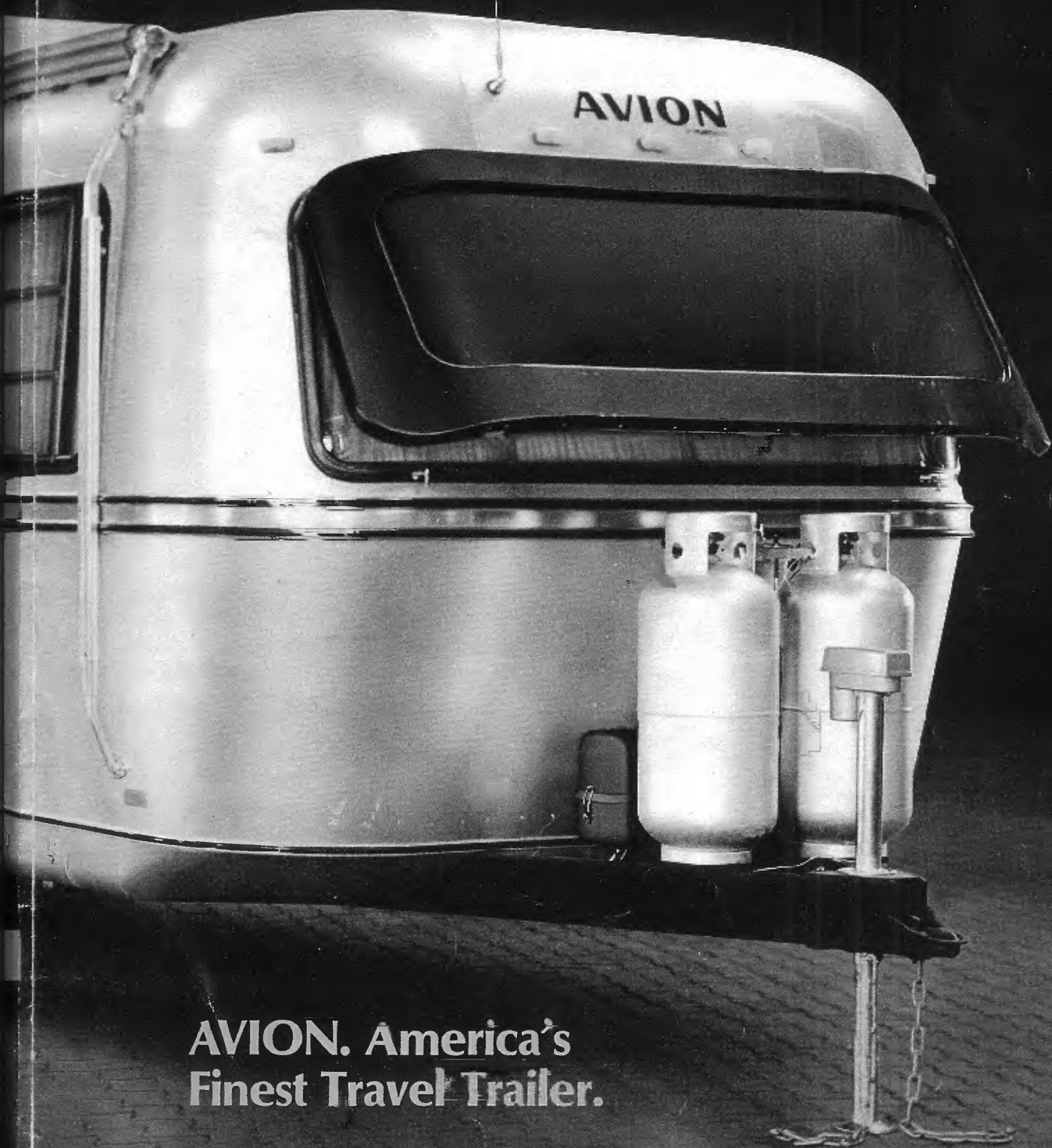
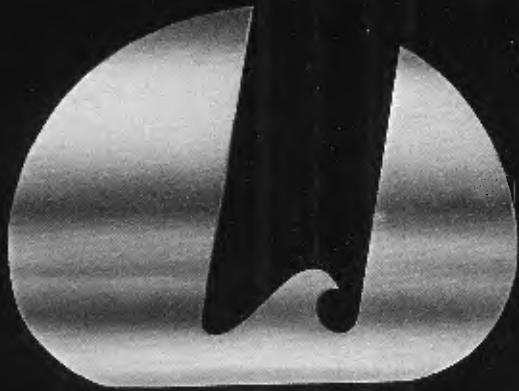


# AVION®



**AVION. America's  
Finest Travel Trailer.**



Your local Avion dealer is:

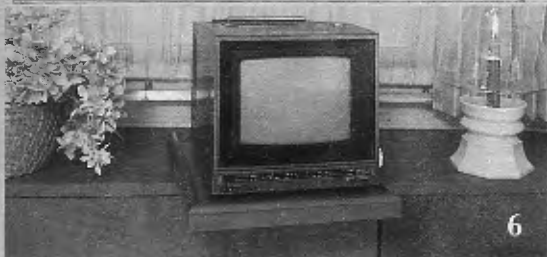
**RV America, Inc.**  
2010 Cassopolis St  
Elkhart, IN 46514  
(219) 264-9621

**FLEETWOOD®**

**FLEETWOOD ENTERPRISES, INC.**

P.O. Box 7638  
Riverside, California 92523





1. Full timing? Retiring? Want the most sought after vacation home? Then you'll appreciate Avion's luxury and durability. Spacious living room accommodations include sofa, swivel chairs for seating preference, elegant draperies. All for your vacation pleasure. 2. The Sealy Posturepedic™ mattress is standard equipment. Sleeping accommodations include twin beds or double bed. 3. Avion's galley is noted for its storage capability and built in conveniences. Even the sink covers function as cutting boards. 4. The vanity countertop is covered with self-edged, high-impact marble finish laminate for durability. A residential quality Delta™ single-mix faucet is standard. 5. All RV systems are monitored in this central panel. AM/FM cassette stereo, digital alarm clock, ammeter and 12V circuit "fail safe" switch are included. 6. Designed for today's portable TV, the TV table pivots flush with the storage shelf. TV antenna and wiring for cable is standard equipment. 7. All models are equipped with a large tub/shower including a cast-in seat for personal convenience and comfort. 8. Abundant, functional storage is found throughout the Avion. From the

large wardrobes, overhead cabinets and storage beneath convertible furnishings, you travel comfortably equipped. Mortise and tenon construction reflects the craftsmanship found within. Like residential cabinetry, drawers are sanded satin smooth and sealed. 9. Largest possible name brand appliances are included. Avion is equipped with a microwave oven and a 4-burner pilot-lighted range with oven large enough for a family sized turkey.

## Other Features Include:

- Anodized aluminum aircraft type construction
- Up to 11 exterior storage compartments
- 2" x 6" reinforced tubular steel chassis
- Braund™ Skyliner TV antenna
- Residential duct heating
- 13.5M BTU roof air conditioner with heat strip
- Omnipower electric system  
... and much, much more.

## International Travel Club

Membership in the Avion International Travelcade Club is available to all Avion owners. Highlights include professionally planned Travelcades, three International Rendezvous as well as State Unit Rallies. The club offers the ideal opportunity to make new friends and enjoy the camaraderie found with Avion ownership. For complete details, contact: Mrs. Helen Williams, Executive Secretary, Avion Travelcade Club, Box 236, DeBary, Florida 32763.

## Ownercare Warranty

Avion travel trailers are protected by a full, one-year Ownercare Warranty. It is Fleetwood's commitment to owner satisfaction. Your Avion dealer has complete details.

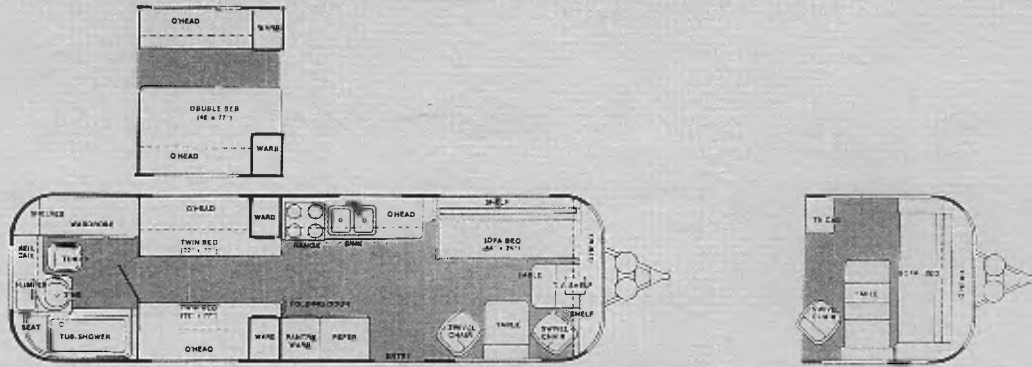
**Avion Travel Trailers are manufactured by this subsidiary of Fleetwood Enterprises, Inc.**

**AVION COACH CORPORATION**  
1300 E. Empire Avenue  
Benton Harbor, Michigan 49022

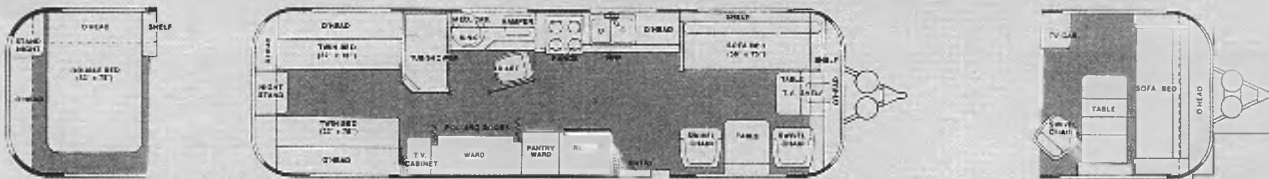
# Avion Model Selector



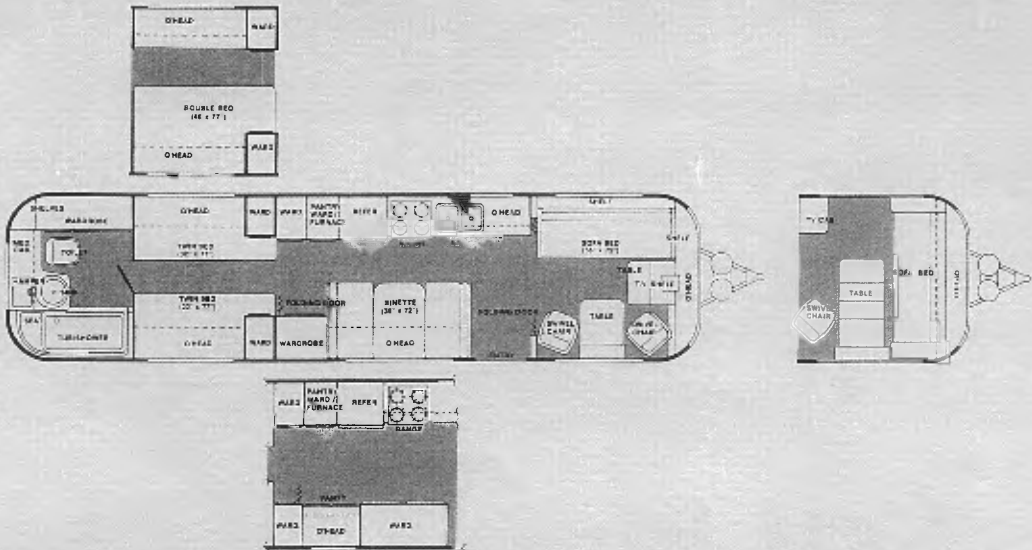
**MODEL 30P** This tandem axle model features the side sofa bed and twin swivel chairs. No charge options include a double bed and a front sofa bed with side mounted extension table and swivel chair. Living room and bath are the same size as in Model 34V.



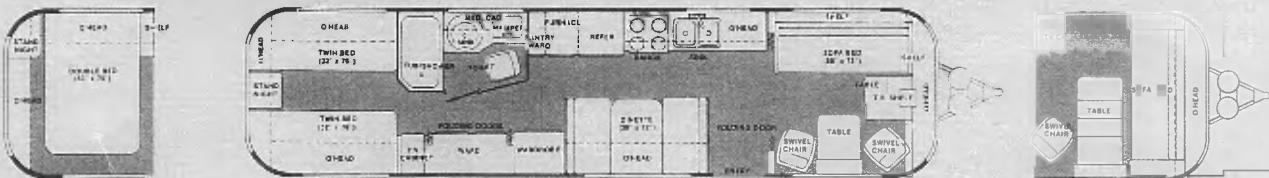
**MODEL 30R** This tandem axle plan offers center bath convenience and rear bedroom privacy. No charge options include a double bed and front sofa bed with side mounted extension table and swivel chair. Center bath has full size tub/shower.



**MODEL 34V** This highly popular Avion model offers the traditional features the discriminating family desires. No charge options include a front sofa bed with a side mounted extension table and swivel chair; double bed, roadside wards and vanity. Has tri-axle Adjust-A-Ride™ suspension.



**MODEL 34W** This thirty-four foot tri-axle model has an extra large center bath with an exclusive full tub/shower and rear bedroom. It features the side sofa bed, tables and swivel chairs. No charge options include a double bed and front sofa bed with a side mounted extension table and swivel chair.



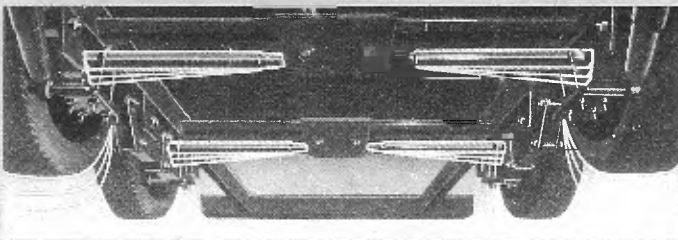
A word about options: The only extra charge factory installed options available are (1) long length doorside awning (2) roadside/rear awning combination for living room, galley, bedroom and bath windows.

# 1984 Avion Specifications

	30P	30R	34W	34V
<b>Weights, Measures</b>				
Length, including hitch	30'1"	30'1"	34'11"	34'11"
Width	7'10 <sup>3</sup> / <sub>4</sub> "	7'10 <sup>3</sup> / <sub>4</sub> "	7'10 <sup>3</sup> / <sub>4</sub> "	7'10 <sup>3</sup> / <sub>4</sub> "
Height (including roof air)	9'11"	9'11"	9'11"	9'11"
GVWR - lbs.	8,550	8,550	9,500	9,500
Gross dry weight - lbs.	5,840	5,890	6,730	6,940
Hitch dry weight - lbs.	630	610	720	765
<b>Livability Systems</b>				
Fresh water - gals.	65	65	65	65
Manual water fill - spout w/lock	•	•	•	•
Dual holding tanks - waste/grey - gals.	40/30	40/30	40/30	40/30
Dual LP tanks, sight gauge - lbs.	40	40	40	40
Everpure™ water purifier	•	•	•	•
13.5M BTU roof air, heat strip	•	•	•	•
LPG auto changeover regulator	•	•	•	•
30M BTU ducted furnace w/thermostat	•	•	•	•
Electronic ignition water heater - gals.	6	6	6	6
<b>Construction</b>				
Riveted aluminum ribs and stringers	•	•	•	•
Bright anodized aluminum exterior	•	•	•	•
2" x 6" tubular steel chassis*	•	•	•	•
Adjust-A-Ride™ suspension	•	•	•	•
Riveted vinyl coated aluminum interior	•	•	•	•
Hand finished solid wood cabinetry	•	•	•	•
Heavy duty rear bumper	•	•	•	•
Steel wheels, deluxe covers	•	•	•	•
Full size aluminum entry/screen door	•	•	•	•
Thermo-X™ insulation	•	•	•	•
Code approved wiring, plumbing	•	•	•	•
Insulated sandwich panel subfloor	•	•	•	•
Vinyl foam sealant tape	•	•	•	•
Electric brakes, all wheels	•	•	•	•
Tires, H78 x 15 ST - load range**	C	C	C	C
7.00 x 15 LT - load range**	D	D	D	D
<b>Electrical</b>				
Dual 12 volt battery container	•	•	•	•
Omnipower 110V converter/charger	•	•	•	•

\* Includes additional 2" x 4" tubular steel reinforcement at load bearing points.

\*\* Depending upon availability.



## Adjust-A-Ride™ Suspension

Patented in February 1980, this exclusive suspension system absorbs the "G" forces created by irregular roads. Each wheel has its own axle, spring and shock absorber. Adjust-A-Ride offers more protection for personal goods and provides effortless, smooth towing.

	30P	30R	34W	34V
<b>Electrical (con't.)</b>				
Utility compartment 110V outlet	•	•	•	•
Extra long H.D. 110V shore line	•	•	•	•
Prewired for cable TV	•	•	•	•
Switch controlled interior/exterior lighting	•	•	•	•
<b>Travel/Camping Conveniences</b>				
Front window rockguard/sunshade	•	•	•	•
Heavy duty power hitch jack	•	•	•	•
Retractable entry step w/hinged cover	•	•	•	•
Multiple exterior storage compartments	•	•	•	•
Stabilizing jacks	•	•	•	•
Exterior convenience lights, hitch, utilities	•	•	•	•
Awning rails, both sides	•	•	•	•
Water hose compartment	•	•	•	•
Concealed drain hose valve	•	•	•	•
Lighted trunk with spare tire and jack	•	•	•	•
Backup lights	•	•	•	•
Emergency egress, fire extinguisher	•	•	•	•
Rear hose storage compartment	•	•	•	•
Large tinted glass torque windows	•	•	•	•
RV systems monitor w/12V failsafe	•	•	•	•
<b>Personal Conveniences</b>				
Adjustable reading lights	•	•	•	•
AM/FM cassette stereo w/4 speakers	•	•	•	•
Braund Skyliner™ VHF/UHF TV antenna w/amplifier	•	•	•	•
Dometic™ 10 cu. ft. (rated) auto 3-way refrigerator	•	•	•	•
Magic Chef™ microwave oven	•	•	•	•
Sealy Posturepedic™ mattress(es)	•	•	•	•
Lighted/fan powered galley vent	•	•	•	•
Deluxe ceiling vents with fans	•	•	•	•
5" thick superfoam cushions	•	•	•	•
Indirect lighting, living room	•	•	•	•
Removable deep pile carpet	•	•	•	•

Prices and specifications are subject to change without notice. Photos are representative of the product. Subsequent refinements would be in the actual product. Selected decorator items may not be part of the product.